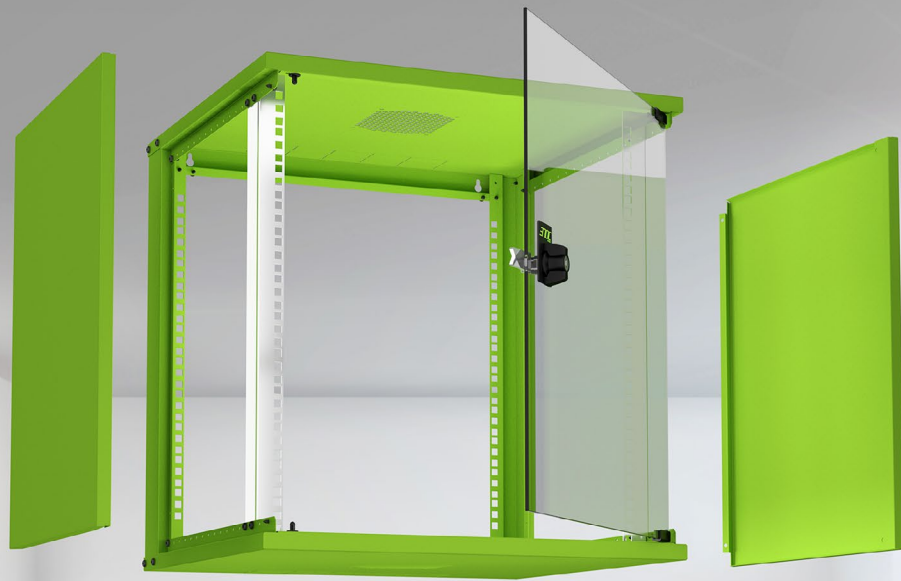




# ENOC W3

EASY TO INSTALL  
EASY TO ACCESS  
EASY TO COLOUR



**EASY ACCESS**  
Installation and service  
is made easy from 3 sides

**MANY SIZES**  
Heights: 6, 9, 12, 15 & 21 HU  
Depths: 400, 500 or 600 mm

**COLOURFUL**  
Standard: Beige or black  
Optional: RAL colours

The Enoc W3 is our new serie of wall cabinets with a smart and functional design for small networks. The front and two detachable sides ensure a quick and cost effective installment. And afterwards it makes service even easier. At Enoc we are committed to finding the solution that best fits you. That is what we call "The Enoc Way".

**NEW!** 400 mm. Now also available with steel doors in 6 & 12 HU, in all depths.



[ENOCSYSTEM.COM](http://ENOCSYSTEM.COM)

**ENOC**

DETAILS MAKE THE DIFFERENCE



# TECHNICAL INFORMATION - ENOC W3 WALL CABINET

## SIZES

Heights: 6, 9, 12, 15 & 21 HU  
 Depths: 400, 500 or 600 mm

## MAXIMUM STATIC LOAD

- W3, 6 HU, 30 kg
- W3, 9 HU, 30 kg
- W3, 12 HU, 35 kg
- W3, 15 HU, 35 kg
- W3, 21 HU, 40 kg

## EASY ACCESS

Installation and service is made easy from 3 sides

## TECHNICAL INFORMATION

- Made of bent sheet steel
- Sheet steel sides, detachable
- Door opening angle 110°
- Surface treatment, textured Enoc System beige or black RAL 9005
- Glass door is made of safety glass
- Metal door of steel sheet (6 and 12 HU)
- Passive ventilation in top and bottom
- Top and bottom plates have knock-outs for cable glands. Supplied with edging strip for cable protection
- One pair of 19" profiles (482.6 mm) pre-fitted 80 mm in from the enclosure front, can be repositioned at 25 mm intervals through depth of the enclosure
- 19" hole pattern in rear uprights for mounting accessories
- Extra pair of 19" profiles available as accessory
- Keyholes for wall mounting
- Lock LS 15 with security cylinder C101. 2 keys included
- Open back, the back panel as accessory
- Other RAL colours on request

## W3 BEIGE

| TYPE DESIGNATION | ART.NO. | EAN-NUMBER    | WxDxH (mm)  | MAX. STATIC LOAD | HU |
|------------------|---------|---------------|-------------|------------------|----|
| W3 6-4           | 57401   | 7330701103001 | 550x400x314 | 30 kg            | 6  |
| W3 9-4           | 57402   | 7330701103018 | 550x400x448 | 30 kg            | 9  |
| W3 12-4          | 57403   | 7330701103025 | 550x400x581 | 35 kg            | 12 |
| W3 15-4          | 57404   | 7330701103032 | 550x400x714 | 35 kg            | 15 |
| W3 6-5           | 57411   | 7330701103100 | 550x500x314 | 30 kg            | 6  |
| W3 9-5           | 57412   | 7330701103117 | 550x500x448 | 30 kg            | 9  |
| W3 12-5          | 57413   | 7330701103124 | 550x500x581 | 35 kg            | 12 |
| W3 15-5          | 57414   | 7330701103131 | 550x500x714 | 35 kg            | 15 |
| W3 21-5          | 57416   | 7330701103155 | 550x500x979 | 40 kg            | 21 |
| W3 6-6           | 57421   | 7330701103209 | 550x600x314 | 30 kg            | 6  |
| W3 9-6           | 57422   | 7330701103216 | 550x600x448 | 30 kg            | 9  |
| W3 12-6          | 57423   | 7330701103223 | 550x600x581 | 35 kg            | 12 |
| W3 15-6          | 57424   | 7330701103230 | 550x600x714 | 35 kg            | 15 |
| W3 21-6          | 57426   | 7330701103254 | 550x600x979 | 40 kg            | 21 |

## W3 BLACK

| TYPE DESIGNATION | ART.NO. | EAN-NUMBER    | WxDxH (mm)  | MAX. STATIC LOAD | HU |
|------------------|---------|---------------|-------------|------------------|----|
| W3 6-4-S         | 57431   | 7330701103308 | 550x400x314 | 30 kg            | 6  |
| W3 9-4-S         | 57432   | 7330701103315 | 550x400x448 | 30 kg            | 9  |
| W3 12-4-S        | 57433   | 7330701103322 | 550x400x581 | 35 kg            | 12 |
| W3 15-4-S        | 57434   | 7330701103339 | 550x400x714 | 35 kg            | 15 |
| W3 6-4-P-S       | 57437   | 7330701103360 | 550x400x314 | 30 kg            | 6  |
| W3 12-4-P-S      | 57439   | 7330701103384 | 550x400x581 | 35 kg            | 12 |
| W3 6-5-S         | 57441   | 7330701103407 | 550x500x314 | 30 kg            | 6  |
| W3 9-5-S         | 57442   | 7330701103414 | 550x500x448 | 30 kg            | 9  |
| W3 12-5-S        | 57443   | 7330701103421 | 550x500x581 | 35 kg            | 12 |
| W3 15-5-S        | 57444   | 7330701103438 | 550x500x714 | 35 kg            | 15 |
| W3 21-5-S        | 57446   | 7330701103452 | 550x500x979 | 40 kg            | 21 |
| W3 6-5-P-S       | 57447   | 7330701103469 | 550x500x314 | 30 kg            | 6  |
| W3 12-5-P-S      | 57449   | 7330701103483 | 550x500x581 | 35 kg            | 12 |
| W3 6-6-S         | 57451   | 7330701103506 | 550x600x314 | 30 kg            | 6  |
| W3 9-6-S         | 57452   | 7330701103513 | 550x600x448 | 30 kg            | 9  |
| W3 12-6-S        | 57453   | 7330701103520 | 550x600x581 | 35 kg            | 12 |
| W3 15-6-S        | 57454   | 7330701103537 | 550x600x714 | 35 kg            | 15 |
| W3 21-6-S        | 57456   | 7330701103551 | 550x600x979 | 40 kg            | 21 |
| W3 6-6-P-S       | 57457   | 7330701103568 | 550x600x314 | 30 kg            | 6  |
| W3 12-6-P-S      | 57459   | 7330701103582 | 550x600x581 | 35 kg            | 12 |

