

NEW!



# ENOC F1 SR & NSVB SR

## SOUNDPROOF FLOOR AND WALL CABINET

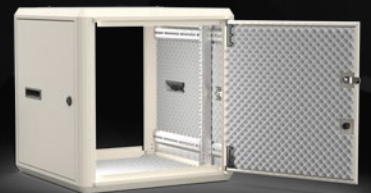


**TYPICAL NOISE  
FROM ACTIVE  
EQUIPMENT**

Open frame	55 dBA
F1/NSVB standard	50 dBA
F1 SR/NSVB SR	42 dBA

Normal office background noise  
is approximately 40 dBA.  
Measured from a distance of 1 m

Computer cabinets F1 SR and NSVB SR have been soundproofed to reduce disturbing fan noise etc. from the inside of the cabinet. Results from our tests show that adding SRM mat to the side panels and rear door as well as adding sealing around front and backdoor substantially reduced the noise level. The SRM mat used in our SR cabinets can also be purchased separate for retrofitting SRM mat in your existing cabinet. At Enoc we are committed to finding the solution that best fits you. That is what we call "The Enoc Way".



[ENOCSYSTEM.COM](http://ENOCSYSTEM.COM)

**ENOC**

DETAILS MAKE THE DIFFERENCE



## TECHNICAL INFORMATION ENOC F1 SR



**F1 SR are F1 cabinets built to reduce the emitting noise from any equipment inside the rack. SRM mats can be purchased separately to supplement existing cabinets. F1 SR is available in heights 24 and 42 HU in combination with 800 mm width and depth 800 and 1000 mm.**

### Performance

Adding SRM mat to side panels and rear door, as well as adding sealing around front and back doors together with three-point locking, the noise level is lowered substantially. Results from our tests show a significantly reduced noise level.

Fan with a typical active equipment noise have the following result (measured from 1 m distance):

Open frame:	55 dBA
F1 standard:	50 dBA
F1 SR:	42 dBA*

\*For reference, "normal" office background noise is around 40 dBA.

- Screw-assembled frame with aluminum profiles and die-cast zinc corners. The frame has two integrated vertical screw pockets in each corner profile for universal mounting of accessories.
- Frame can be dismantled by means of screws.
- Finish: Enoc System textured beige or black RAL 9005. Other colours on request.
- Ingress protection class IP20.
- Maximum static load 1.500 kg, on four 19" profiles.
- Front door made of 4 mm smoke-coloured safety glass built into an aluminum frame. LS 85 ergonomic locking handle with C101 safety cylinder. Can be adapted for other lock systems. Integrated quick lock system allows door to be removed without use of tools. Door opening angle >180° in single enclosure configuration. Right-hinged, can be re-hung to be left-hinged.
- Rear door made of 1 mm sheet steel built into an aluminum frame. LS 37 lock with C101 safety cylinder. Can be retrofitted with lock handle LS 85. Other similar to front door.
- Sheet steel side panels, easy to detach and lockable from inside. Integrated handle for easier handling.
- The top consists of replaceable modular panels. One panel has cable glands with brush strip on the back and the rest are cover plates. Can be replaced with ventilation panels, fan packages or panels with integrated cable glands. All modules can be rotated 90° and assembled with the cable glands on the left and/or right side. The U-shaped panel with integrated cable glands makes it easy to move pre-existing installations into the enclosure.
- The base is open but can be fitted with cover plate/ base plate packages.
- The 19" profiles can be steplessly repositioned through the depth of the enclosure. The depth profiles have markings for precise positioning. The 19" profiles are numbered in height units. The whole 19" assembly can be moved right or left to an off-center position.



## TECHNICAL INFORMATION ENOC NSVB SR



**NSVB SR is a NSVB wall cabinet built to reduce the emitting noise from any equipment inside the rack. SRM mats can be purchased separately to supplement existing cabinets. NSVB SR is available in heights 12, 15 and 21 HU, width 600 mm and depth 600 mm.**

### Performance

Adding SRM mat to side panels, roof, bottom and front door, the noise level is lowered substantially. Results from our tests show a significantly reduced noise level.

Fan with a typical active equipment noise have the following result (measured from 1 m distance):

Open frame: 55 dBA

NSVB standard: 50 dBA

NSVB SR: 42 dBA\*

\* For reference, "normal" office background noise is around 40 dBA.

- Made of aluminum profiles and diecast zinc corner pieces. Detachable.
- Finish: Enoc System textured beige RAL 9005. Other colours on request.
- Maximum static load 80 kg.
- Ingress protection class IP 20.
- Sheet steel metal door. Locking handle LS 75 with standard lock cylinder for key C101. Can be adapted for other lock systems. Door opening angle 190°. Right-hinged, can be re-hung to be left-hinged.
- Sheet steel side panels, easy to detach and lockable from inside. Integrated handle for easier use.
- The top and bottom consist of replaceable modular plates, one with cable glands (KGF) including an adjustable foam plastic seal and rest cover plates (BPT/UP). Can be replaced with ventilation panels (VP) or fan packages (FPM/FPS).
- Back panel not included, available as accessory (BS).
- One pair of 19" profiles can be steplessly re-positioned through the depth of the enclosure. Additional 19" profiles (PR) are available as accessories.



## TECHNICAL DATA

### F1 SR

NAME	ART. NO.	EAN	W x D x H (mm)	HU	COLOUR
F1 SR 8812	57661	7330701038600	800 x 800 x 1200	24	Beige
F1 SR 81012	57662	7330701038617	800 x 1000 x 1200	24	Beige
F1 SR 8820	57666	7330701038655	800 x 800 x 2000	42	Beige
F1 SR 81020	57667	7330701038662	800 x 1000 x 2000	42	Beige
F1 SR 8812-S	57671	7330701038709	800 x 800 x 1200	24	Black
F1 SR 81012-S	57672	7330701038716	800 x 1000 x 1200	24	Black
F1 SR 8820-S	57676	7330701038754	800 x 800 x 2000	42	Black
F1 SR 81020-S	57677	7330701038761	800 x 1000 x 2000	42	Black

\* Other sizes available on request

### NSVB SR

NAME	ART. NO.	EAN	W x D x H (mm)	HU	COLOUR
NSVB SR 6606-P	57681	7330701038808	600 x 600 x 600	12	Beige
NSVB SR 6607-P	57682	7330701038815	600 x 600 x 700	15	Beige
NSVB SR 6610-P	57683	7330701038822	600 x 600 x 1000	21	Beige

### ACCESSORIES

NAME	ART. NO.	EAN	DESCRIPTION
SRM 1020	57660	7330701038594	Silence Resistance Mat, 1000 x 2000 x 30 mm

The SRM mat used in our SR cabinets can also be purchased separate for retrofitting of SRM mat in your existing cabinet. The SRM comes in 1000 x 2000 mm and thickness 30 mm.

- Adhesive backing
- Flexible polyurethane foam
- Colour: Grey
- Flame retarded

